

100-LCCEA Series

FEATURES:

- AC Input 100~277VAC
- Built-in Active PFC Function
- Protection: SCP / OVP / OTP
- Surge protection: L-N 6KV, L-FG/N-FG 4KV
- Flicker Free
- High Operating Ambient Temp.: -40°C~+50°C
- Safety: UL8750 ,Type TL, Type HL
- EMI: FCC / CE
- IP 67 Compliant
- Warranty: 5 years (refer to warranty policy)
- RoHS Compliant



Constant Current Mode

PRODUCT SPECIFICATION

MODEL	DC OUTPUT POWER (W)	DC OUTPUT VOLTAGE (V)	OUTPUT CURRENT (A)	OUTPUT CURRENT TOLERANCE	EFFICIENCY (Typ.)				Power Factor (Typ.)			
					100VAC	120VAC	200VAC	277VAC	100VAC	120VAC	200VAC	277VAC
LCCEA100U240	96	15-24	4	±5%	85.0%	86.0%	88.0%	89.0%	0.99	0.98	0.96	0.93
LCCEA100U360	97.2	22-36	2.7	±5%	86.0%	87.0%	89.0%	90.0%	0.99	0.98	0.96	0.93
LCCEA100U420	96.6	24-42	2.3	±5%	86.0%	87.0%	89.0%	90.0%	0.99	0.98	0.96	0.93
LCCEA100U480	96	26-48	2	±5%	87.0%	88.0%	89.0%	90.0%	0.99	0.98	0.96	0.93
LCCEA100U540	97.2	30-54	1.8	±5%	88.0%	89.0%	90.0%	90.0%	0.99	0.98	0.96	0.93

Input Specifications

	Min.	Typ.	Max.	Units	Conditions/Description
Input Voltage Range	90		305	Vac	
Input Frequency Range	47		63	Hz	
Input Current		1.2		A	100VAC in
Inrush Current			65	A	230VAC in, 25°C Cold start
Leakage Current			0.75	mA	277VAC in
Power Factor (PF)	0.9				
Total Harmonics Distortion (THD)			20	%	100-277VAC, 100% load

Output Specifications

	Min.	Typ.	Max.	Units	Conditions/Description
Line Regulation			±3	%	
Load Regulation			±3	%	
Output Current Regulation	-5	±2.5	5	%	
Ripple and Noise (pk-pk)			0.54	V	20MHz Bandwidth. See note (3)
Ripple Current	<8% of rated output current				*Measured at electronic load LED mode and nominal input voltage with DC10V dimming.
Turn-on Delay Time			1	s	*Measured at 100-277VAC and at full load

Protection Functions

	Min.	Typ.	Max.	Units	Conditions/Description
Short Circuit Protection					Auto recovery
Over Voltage Protection					Latching, See individual models OVP levels
Over Temp Protection (Tc)					Latching, re-power on to recover

Environmental Conditions

	Min.	Typ.	Max.	Units	Conditions/Description
Operating Temperature (Ta)	-40		50	°C	Non-condensing
Operating Humidity	10		90	%RH	Non-condensing
Operating Case Temperature (Tc)			90	°C	Case temperature measured at the case hot spot Measured at 100Vac, Ta 50°C
Storage Temperature	-40		80	°C	Non-condensing
Storage Humidity	10		95	%RH	Non-condensing
Life Time	Measured at 277Vac, 45,000 hours at Tc 75°C for LCCEA100U540				
Dimensions(L*W*H)	232 * 46.5 * 31 mm 9.13 * 1.83 * 1.22 inch				
Weight			690	g	

100-LCCEA Series

Constant Current Mode

EMC Compliance and Safety			
EMC Compliance			
Conducted and Radiated Emission	EN 55015 (CISPR15) , FCC part 15 Class B		
Harmonic Current Emissions	EN 61000-3-2 Class C		
Voltage Fluctuations & Flicker	EN 61000-3-3		
EMS Standards	Electrostatic Discharge (ESD)	IEC 61000-4-2	8 KV air discharge, 4 KV contact discharge
	RF Electromagnetic Field Susceptibility	IEC 61000-4-3	
	Electrical Fast Transient	IEC 61000-4-4	
	Surge Immunity	IEC 61000-4-5	L-N 6KV, L-FG/N-FG 4KV
	Conducted RF Disturbances	IEC 61000-4-6	
	Power Frequency Magnetic Field	IEC 61000-4-8	
	Voltage Dips	IEC 61000-4-11	
Safety			
UL	UL8750 ,Type TL, Type HL		
PSE	Comply with PSE		

Notes

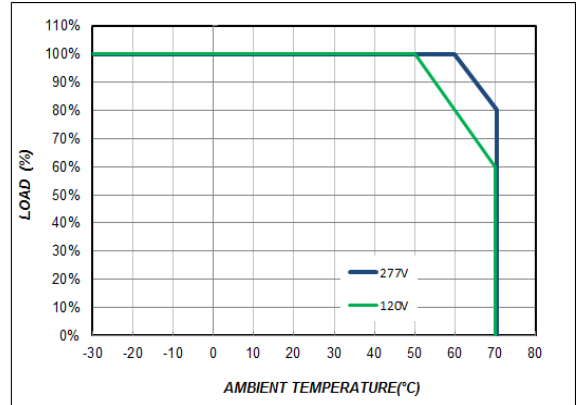
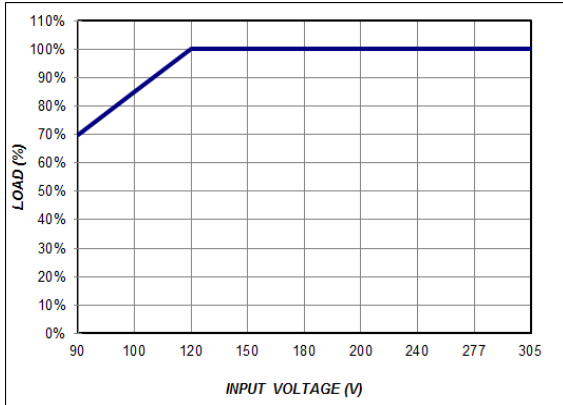
- (1) All parameters not specially mentioned are measured 277VAC input.
- (2) All specifications Typical @25°C , unless otherwise noted, at normal line and load.
- (3) Ripple and Noise measured directly at pins/terminals at nom. load, 0.1uF bypass and 47uF electrolytic, pk-pk @20MHz bandwidth.
- (4) Specified for free-air convection cooling.

* REFERENCE: www.linkcom.com.tw

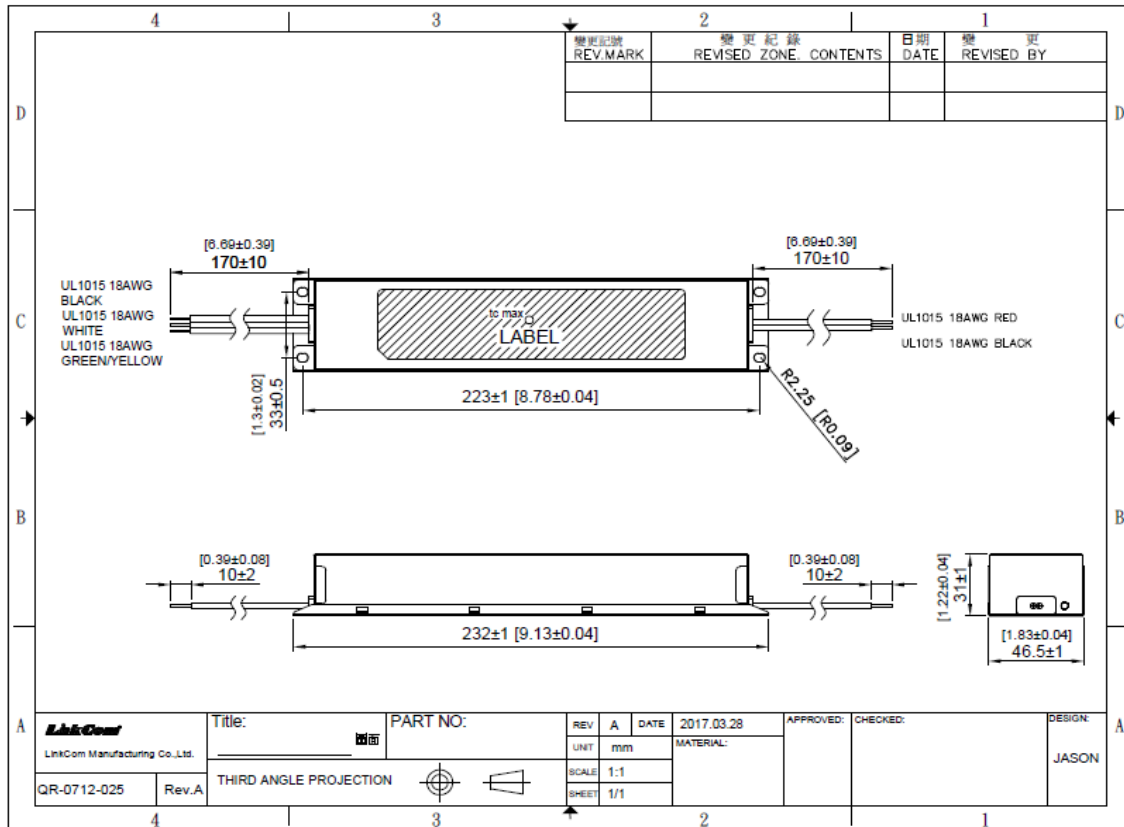
* Please contact sales@linkcom.com.tw, sales@linkcomusa.com for more information

100-LCCEA Series

DERATING CURVE



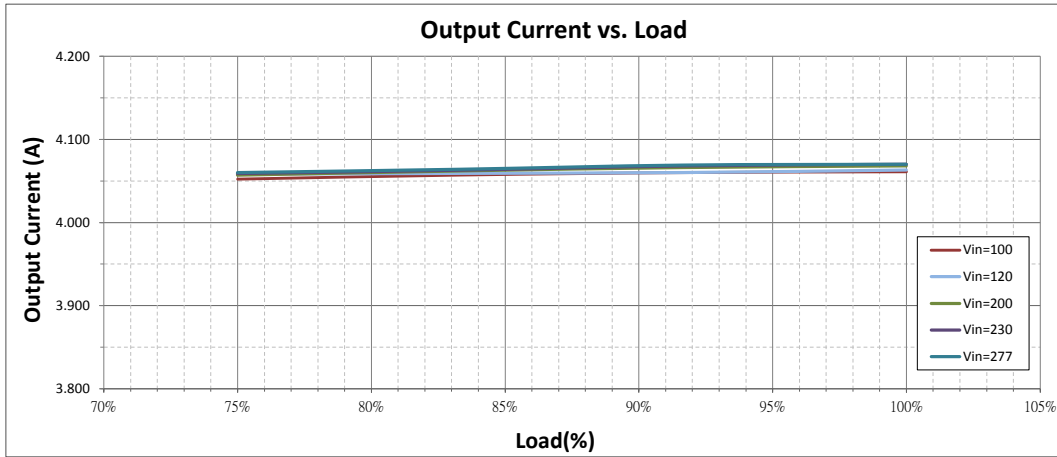
DIMENSIONS



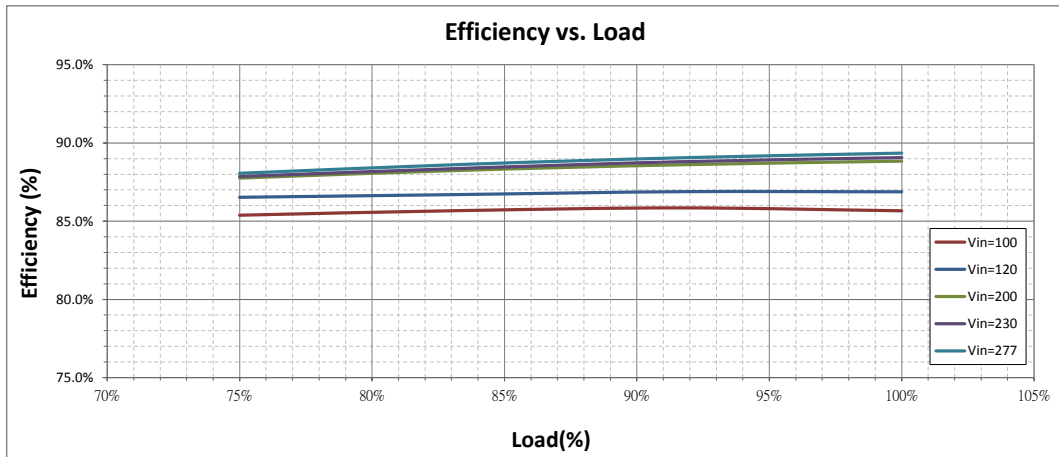
* REFERENCE: www.linkcom.com.tw

100-LCCEA Series

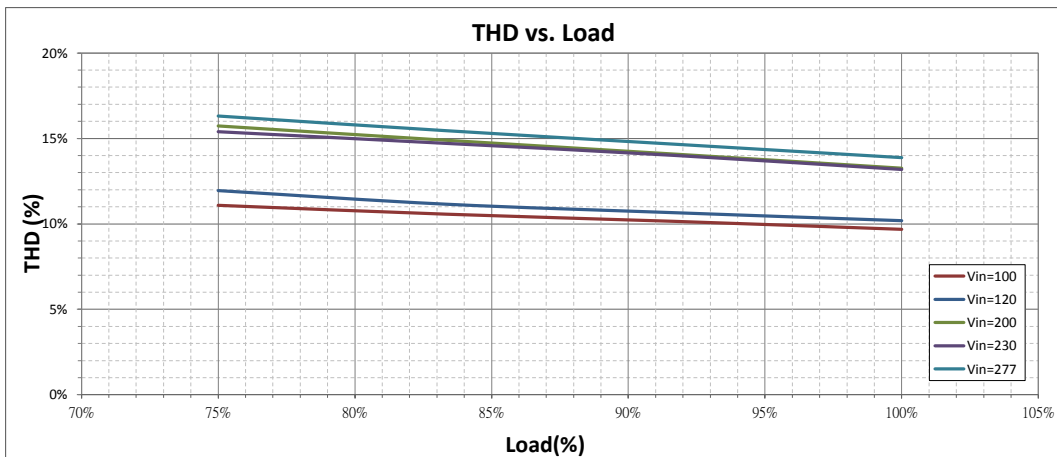
Output Current vs. Load (LCCEA100U240)



Efficiency vs. Load (LCCEA100U240)



THD vs. Load (LCCEA100U240)



100-LCCEA Series

Power Factor vs. Load (LCCEA100U240)

