

150-LCVH Series

Constant Voltage Mode



FEATURES:

- AC Input 100~277VAC
- Built-in Active PFC Function
- Protection: SCP / OVP / OTP / OCP
- High Operating Ambient Temp: -30°C~+60°C
- Surge protection: L-N 2KV, L-FG/N-FG 4KV (L-N 4KV L-FG/N-FG 6KV For LCVH-150U120)
- Safety: UL 60950 / PSE / CB
- EMI: FCC Part 15 Class B / CE
- IP 67 Compliant
- Warranty: 5 years (refer to warranty policy)
- RoHS Compliant

PRODUCT SPECIFICATION

MODEL	DC OUTPUT POWER (W)	DC OUTPUT VOLTAGE (V)	OUTPUT CURRENT (A)	OUTPUT VOLTAGE TOLERANCE	EFFICIENCY (Typ.)				Power Factor (Typ.)			
					100VAC	120VAC	200VAC	277VAC	100VAC	120VAC	200VAC	277VAC
LCVH-150U120	150	12	12.5	±5%	87.0%	89.0%	90.0%	90.0%	0.98	0.98	0.95	0.95
LCVH-150U240	151.2	24	6.3	±5%	87.0%	88.0%	90.0%	90.0%	0.98	0.98	0.95	0.95
LCVH-150U300	150	30	5	±5%	87.0%	88.0%	90.0%	90.0%	0.98	0.98	0.95	0.95
LCVH-150U360	151.2	36	4.2	±5%	88.0%	89.0%	91.0%	91.0%	0.98	0.98	0.95	0.95
LCVH-150U420	151.2	42	3.6	±5%	88.0%	89.0%	91.0%	91.0%	0.98	0.98	0.95	0.95
LCVH-150U480	153.6	48	3.2	±5%	88.0%	89.0%	91.0%	91.0%	0.98	0.98	0.95	0.95

Input Specifications

	Min.	Typ.	Max.	Units	Conditions/Description
Input Voltage Range	90		305	Vac	
Input Frequency Range	47		63	Hz	
Input Current		1.75		A	100VAC in
Inrush Current			65	A	230VAC in, 25°C Cold start
Leakage Current			0.45	mA	230VAC in
Power Factor (PF)	0.9				100-277VAC, 100% load
Total Harmonics Distortion (THD)			15	%	

Output Specifications

	Min.	Typ.	Max.	Units	Conditions/Description
Line Regulation			±3	%	
Load Regulation			±3	%	
Output Voltage Regulation			±5	%	
Ripple and Noise (pk-pk)			0.5	V	20MHz Bandwidth. See note (3)
Ripple Current					N/A
Turn-on Delay Time			2	s	*Measured at 100-277VAC and at full load

Protection Functions

	Min.	Typ.	Max.	Units	Conditions/Description
Short Circuit Protection					Auto recovery
Over Voltage Protection					Latching, See individual models OVP levels
Over Current Protection			160%	Io	Auto recovery
Over Temp Protection (Tc)		105		°C	Latching, re-power on to recover

Environmental Conditions

	Min.	Typ.	Max.	Units	Conditions/Description
Operating Temperature (Ta)	-30		60	°C	Non-condensing
Operating Humidity	10		90	%RH	Non-condensing
Operating Case Temperature (Tc)			95	°C	Case temperature measured at the case hot spot.
Storage Temperature	-40		80	°C	Non-condensing
Storage Humidity	10		95	%RH	Non-condensing
Life Time	Measured at 277Vac, 45,000 hours at Tc 75°C .				
Dimensions(L*W*H)	208.4 * 72 * 38.5 mm 8.2 * 2.83 * 1.52 inch				
Weight		1000		g	

150-LCVH Series

Constant Voltage Mode

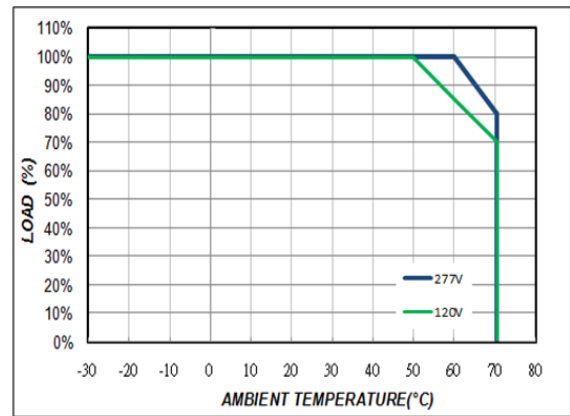
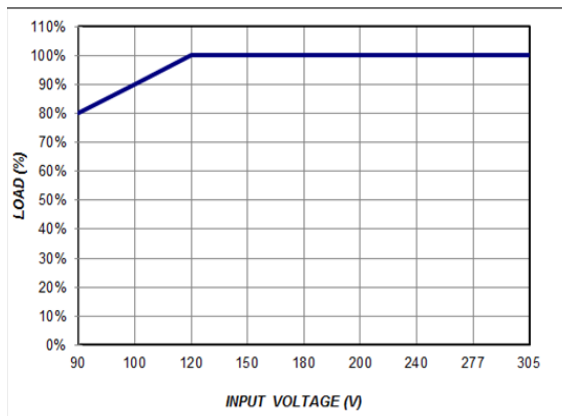
EMC Compliance and Safety			
EMC Compliance			
Conducted and Radiated Emission		EN 55015 (CISPR15) , FCC Part 15 Class B	
Harmonic Current Emissions		EN 61000-3-2 Class C	
Voltage Fluctuations & Flicker		EN 61000-3-3	
EMS Standards	Electrostatic Discharge (ESD)	IEC 61000-4-2	8 KV air discharge, 4 KV contact discharge
	RF Electromagnetic Field Susceptibility	IEC 61000-4-3	
	Electrical Fast Transient	IEC 61000-4-4	
	Surge Immunity	IEC 61000-4-5	L-N 2KV, L-FG/N-FG 4KV (L-N 4KV L-FG/N-FG 6KV For LCVH-150U120)
	Conducted RF Disturbances	IEC 61000-4-6	
	Power Frequency Magnetic Field	IEC 61000-4-8	
	Voltage Dips	IEC 61000-4-11	
Safety			
UL	UL 60950		
PSE	PSE		
CB	IEC 61347-2-13 , IEC 61347-1		

Notes

- (1) All parameters not specially mentioned are measured 230VAC input.
- (2) All specifications Typical @25°C , unless otherwise noted, at normal line and load.
- (3) Ripple and Noise measured directly at pins/terminals at nom. load, 0.1uF bypass and 47uF electrolytic, pk-pk @20MHz bandwidth.
- (4) Specified for free-air convection cooling.
- (5) Operating in minimum load is not proper requirement

DERATING CURVE

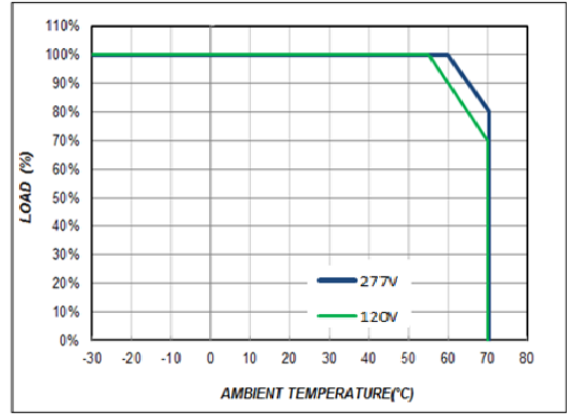
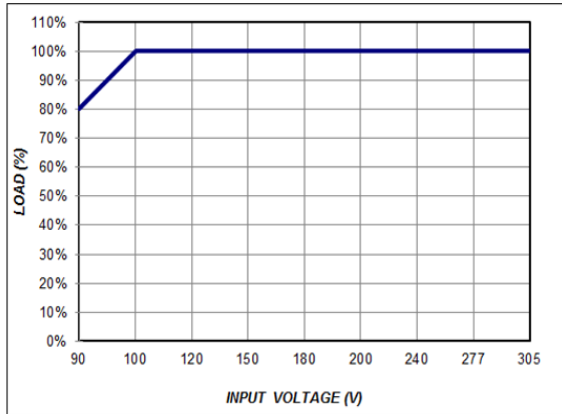
***Only for LCVH-150U120 model.**



* REFERENCE: www.linkcom.com.tw

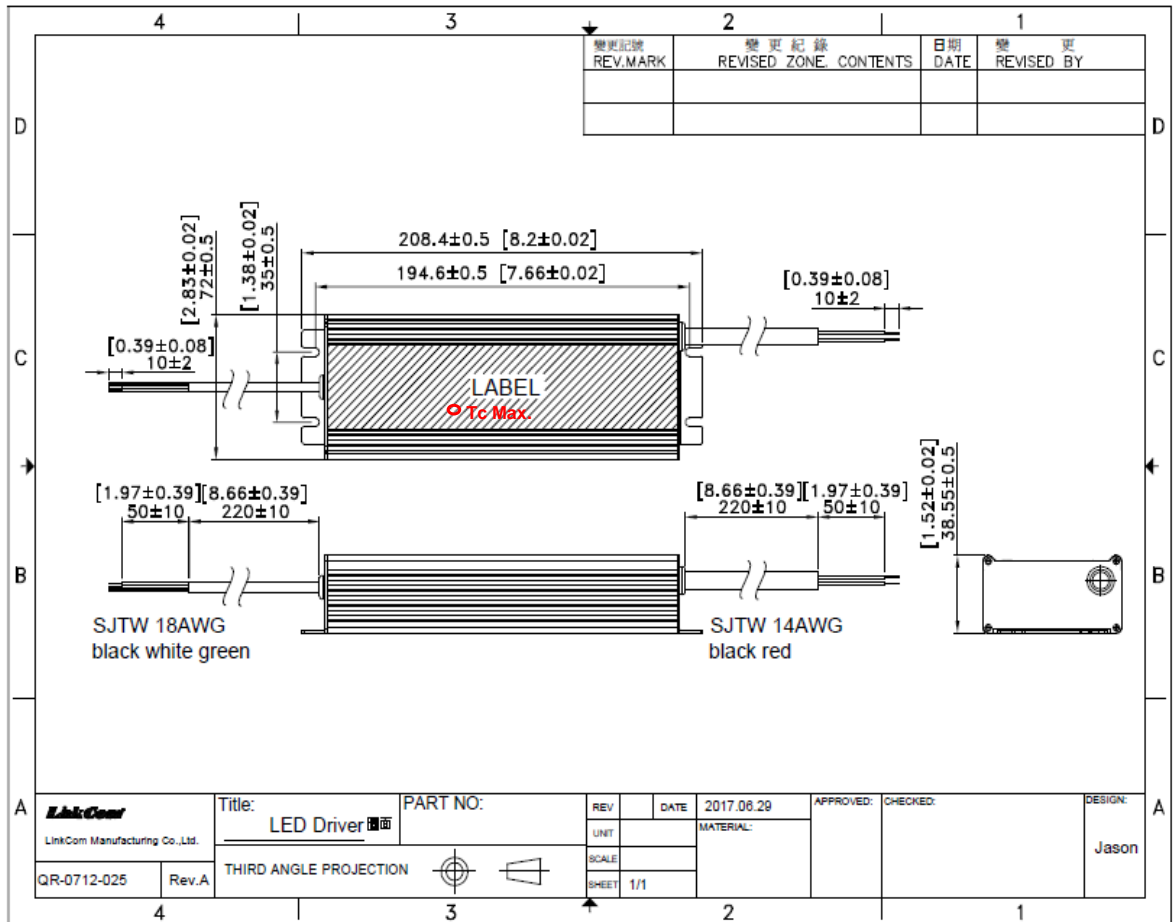
150-LCVH Series

*Other models



DIMENSIONS

For LCVH-150U120 model.

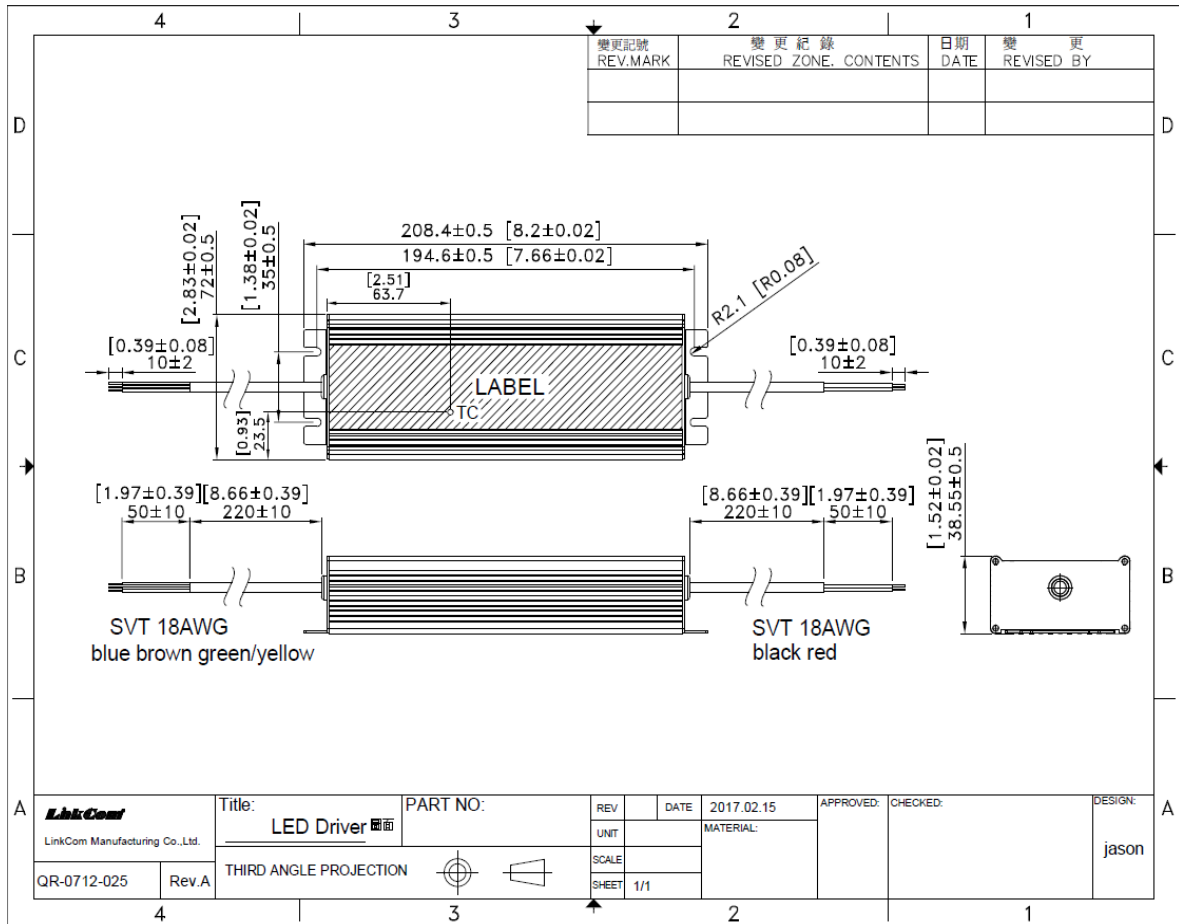


* REFERENCE: www.linkcom.com.tw

150-LCVH Series

*Other models

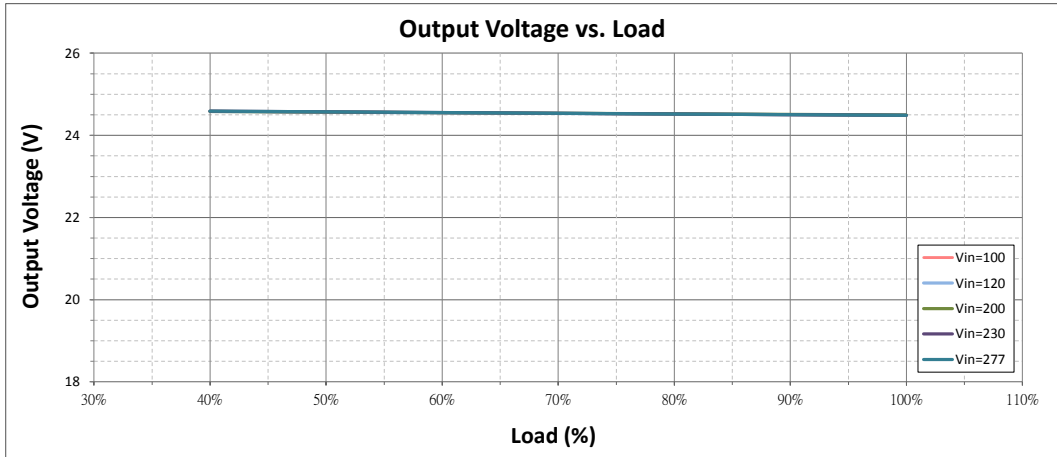
Constant Voltage Mode



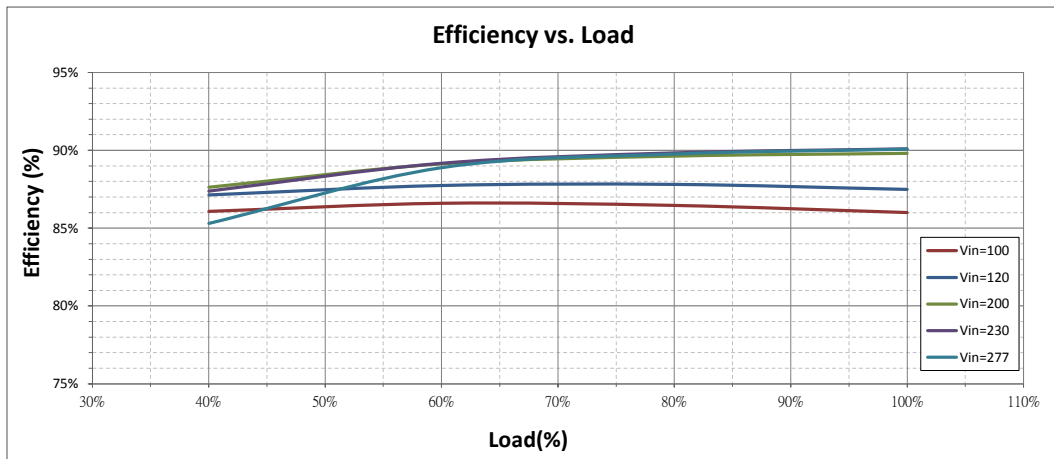
* REFERENCE: www.linkcom.com.tw

150-LCVH Series

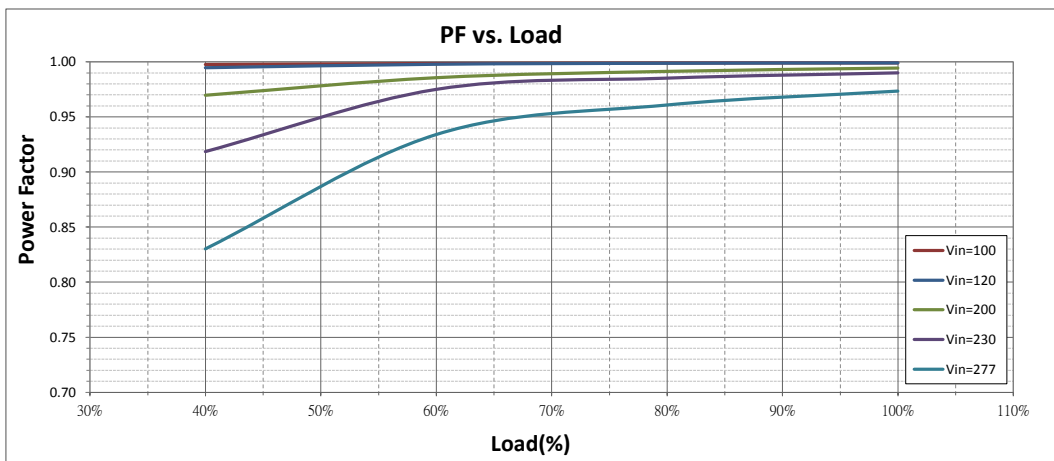
Output Voltage vs. Load (LCVH-150U240)



Efficiency vs. Load (LCVH-150U240)



Power Factor vs. Load (LCVH-150U240)



150-LCVH Series

THD vs. Load (LCVH-150U240)

Constant Voltage Mode

