

## 120-LCVH Series

**FEATURES:**

- AC Input 100~277VAC
- Built-in Active PFC Function
- Protection: SCP / OVP / OTP / OCP
- High Operating Ambient Temp: -30°C~+60°C
- Surge protection: L-N 2KV, L-FG/N-FG 4KV
- Safety: UL 60950 / PSE / CB
- EMI: FCC Part 15 Class B / CE
- IP 67 Compliant
- Warranty: 5 years (refer to warranty policy)
- RoHS Compliant

**PRODUCT SPECIFICATION**

MODEL	DC OUTPUT POWER (W)	DC OUTPUT VOLTAGE (V)	OUTPUT CURRENT (A)	OUTPUT VOLTAGE TOLERANCE	EFFICIENCY (Typ.)				Power Factor (Typ.)			
					100VAC	120VAC	200VAC	277VAC	100VAC	120VAC	200VAC	277VAC
LCVH-120U120	115.2	12	9.6	±5%	85.0%	87.0%	88.0%	88.0%	0.98	0.98	0.95	0.95
LCVH-120U240	120	24	5	±5%	87.0%	88.0%	90.0%	90.0%	0.98	0.98	0.95	0.95
LCVH-120U300	120	30	4	±5%	88.0%	89.0%	90.0%	90.0%	0.98	0.98	0.95	0.95
LCVH-120U360	122.4	36	3.4	±5%	88.0%	89.0%	90.0%	90.0%	0.98	0.98	0.95	0.95
LCVH-120U420	121.8	42	2.9	±5%	88.0%	89.0%	91.0%	91.0%	0.98	0.98	0.95	0.95
LCVH-120U480	120	48	2.5	±5%	88.0%	89.0%	91.0%	91.0%	0.98	0.98	0.95	0.95

**Input Specifications**

	Min.	Typ.	Max.	Units	Conditions/Description
Input Voltage Range	90		305	Vac	
Input Frequency Range	47		63	Hz	
Input Current		1.4		A	100VAC in
Inrush Current			65	A	230VAC in, 25°C Cold start
Leakage Current			0.45	mA	230VAC in
Power Factor (PF)	0.9				
Total Harmonics Distortion (THD)			20	%	100-277VAC, 100% load

**Output Specifications**

	Min.	Typ.	Max.	Units	Conditions/Description
Line Regulation			±3	%	
Load Regulation			±3	%	
Output Voltage Regulation			±5	%	
Ripple and Noise (pk-pk)			0.5	V	20MHz Bandwidth. See note (3)
Ripple Current					N/A
Turn-on Delay Time			2	s	*Measured at 100-277VAC and at full load

**Protection Functions**

	Min.	Typ.	Max.	Units	Conditions/Description
Short Circuit Protection					Auto recovery
Over Voltage Protection					Latching, See individual models OVP levels
Over Current Protection			160%	Io	Auto recovery
Over Temp Protection (Tc)		100		°C	Latching, re-power on to recover

**Environmental Conditions**

	Min.	Typ.	Max.	Units	Conditions/Description
Operating Temperature (Ta)	-30		60	°C	Non-condensing
Operating Humidity	10		90	%RH	Non-condensing
Operating Case Temperature (Tc)			90	°C	Case temperature measured at the case hot spot
Storage Temperature	-40		80	°C	Non-condensing
Storage Humidity	10		95	%RH	Non-condensing
Life Time	Measured at 277Vac, 45,000 hours at Tc 75°C .				
Dimensions(L*W*H)	208.4 * 72 * 38.5 mm 8.2 * 2.83 * 1.52 inch				
Weight		1000		g	

**120-LCVH Series**

Constant Voltage Mode

<b>EMC Compliance and Safety</b>			
<b>EMC Compliance</b>			
<b>Conducted and Radiated Emission</b>	EN 55015 (CISPR15), FCC Part 15 Class B		
<b>Harmonic Current Emissions</b>	EN 61000-3-2 Class C		
<b>Voltage Fluctuations &amp; Flicker</b>	EN 61000-3-3		
<b>EMS Standards</b>	<b>Electrostatic Discharge (ESD)</b>	IEC 61000-4-2	8 KV air discharge, 4 KV contact discharge
	<b>RF Electromagnetic Field Susceptibility</b>	IEC 61000-4-3	
	<b>Electrical Fast Transient</b>	IEC 61000-4-4	
	<b>Surge Immunity</b>	IEC 61000-4-5	L-N 2KV, L-FG/N-FG 4KV
	<b>Conducted RF Disturbances</b>	IEC 61000-4-6	
	<b>Power Frequency Magnetic Field</b>	IEC 61000-4-8	
	<b>Voltage Dips</b>	IEC 61000-4-11	
<b>Safety</b>			
<b>UL</b>	<b>UL 60950</b>		
<b>PSE</b>	<b>PSE</b>		
<b>CB</b>	<b>IEC 61347-2-13 , IEC 61347-1</b>		

**Notes**

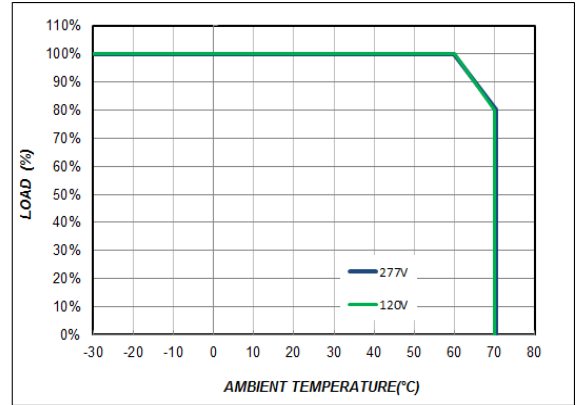
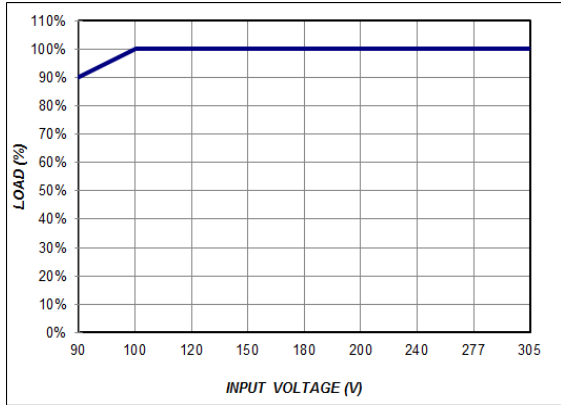
- (1) All parameters not specially mentioned are measured 230VAC input.
- (2) All specifications Typical @25°C, unless otherwise noted, at normal line and load.
- (3) Ripple and Noise measured directly at pins/terminals at nom. load, 0.1uF bypass and 47uF electrolytic, pk-pk @20MHz bandwidth.
- (4) Specified for free-air convection cooling.
- (5) Operating in minimum load is not proper requirement

\* REFERENCE: [www.linkcom.com.tw](http://www.linkcom.com.tw)

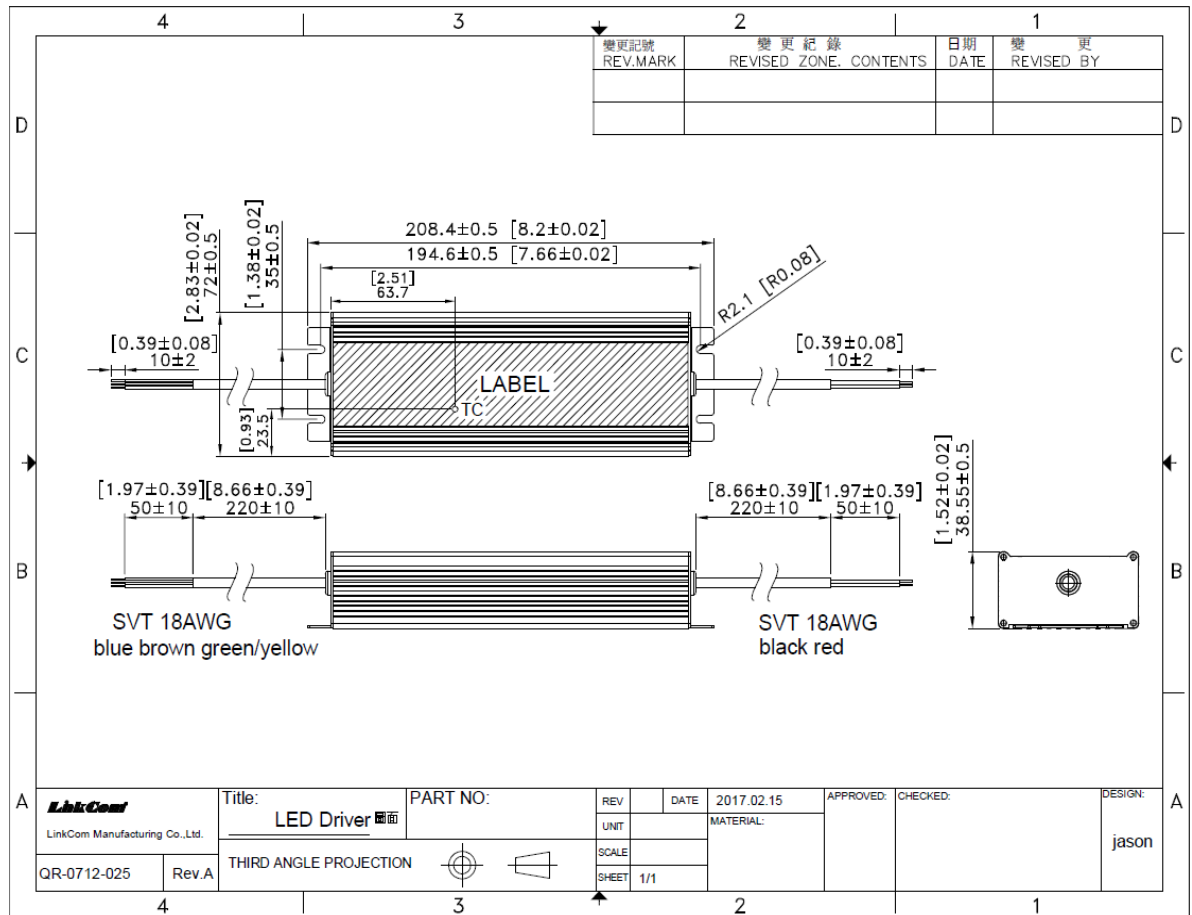
\* Please contact [sales@linkcom.com.tw](mailto:sales@linkcom.com.tw), [sales@linkcomusa.com](mailto:sales@linkcomusa.com) for more information

120-LCVH Series

**DERATING CURVE**



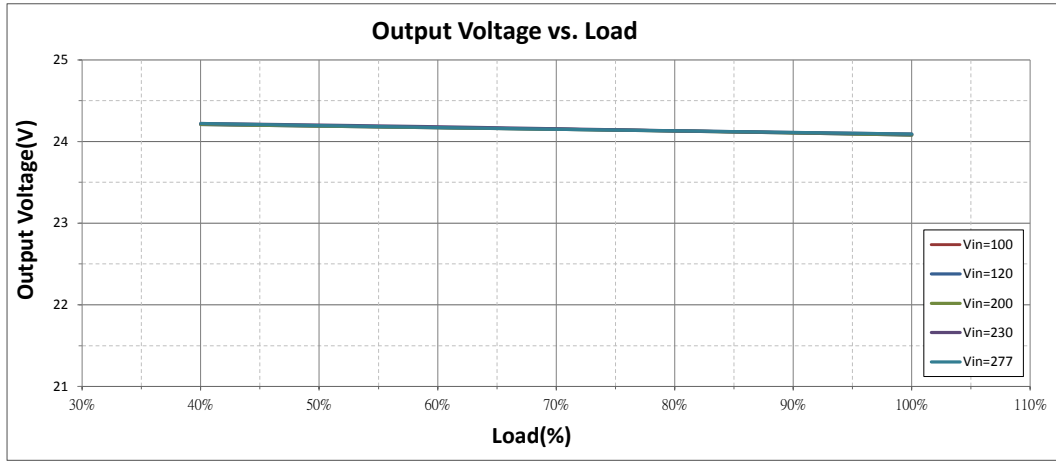
**DIMENSIONS**



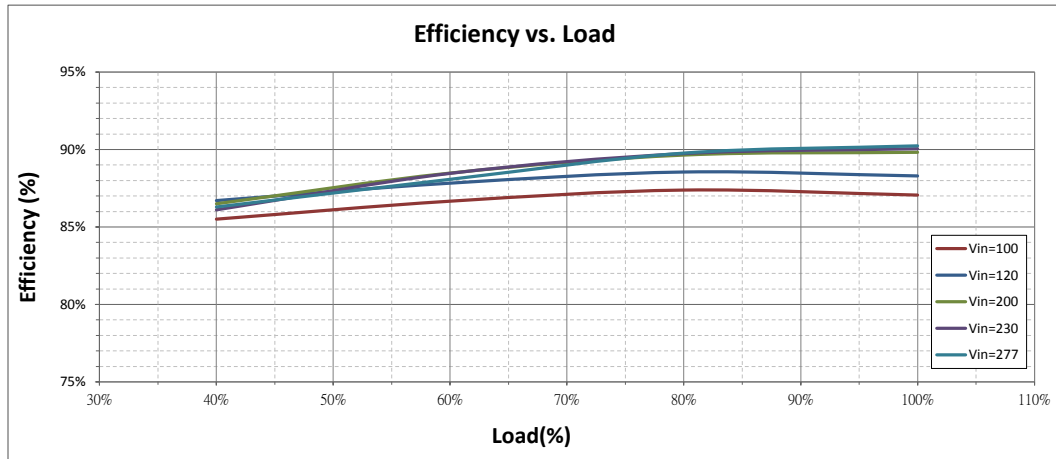
\* REFERENCE: [www.linkcom.com.tw](http://www.linkcom.com.tw)

**120-LCVH Series**

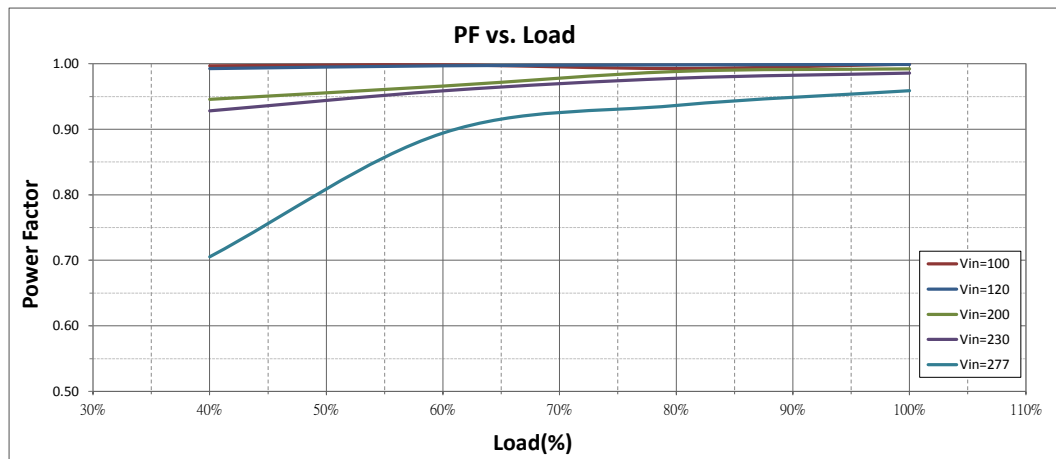
**Output Voltage vs. Load (LCVH-120U240)**



**Efficiency vs. Load (LCVH-120U240)**



**PF vs. Load (LCVH-120U240)**



**120-LCVH Series**

**THD vs. Load (LCVH-120U240)**

Constant Voltage Mode

