

## 100-LCVEA Series

**FEATURES:**

- AC Input 100~277VAC
- Built-in Active PFC Function
- Protection: SCP / OVP / OTP / OCP
- Surge protection: L-N 6KV, L-FG/N-FG 4KV
- Flicker Free
- High Operating Ambient Temp.: -40°C~+55°C
- Safety: UL8750 ,Type TL, Type HL
- EMI: FCC / CE
- IP 67 Compliant
- Warranty: 5 years (refer to warranty policy)
- RoHS Compliant

**PRODUCT SPECIFICATION**

MODEL	DC OUTPUT POWER (W)	DC OUTPUT VOLTAGE (V)	OUTPUT CURRENT (A)	OUTPUT VOLTAGE TOLERANCE	EFFICIENCY (Typ.)				Power Factor (Typ.)			
					100VAC	120VAC	200VAC	277VAC	100VAC	120VAC	200VAC	277VAC
LCVEA100U240	96	24	4	±5%	85.0%	86.0%	88.0%	89.0%	0.99	0.98	0.96	0.93
LCVEA100U360	97.2	36	2.7	±5%	86.0%	87.0%	89.0%	90.0%	0.99	0.98	0.96	0.93
LCVEA100U420	96.6	42	2.3	±5%	86.0%	87.0%	89.0%	90.0%	0.99	0.98	0.96	0.93
LCVEA100U480	96	48	2	±5%	87.0%	88.0%	89.0%	90.0%	0.99	0.98	0.96	0.93
LCVEA100U540	97.2	54	1.8	±5%	88.0%	89.0%	90.0%	90.0%	0.99	0.98	0.96	0.93

**Input Specifications**

	Min.	Typ.	Max.	Units	Conditions/Description
Input Voltage Range	90		305	Vac	
Input Frequency Range	47		63	Hz	
Input Current		1.2		A	100VAC in
Inrush Current			65	A	230VAC in, 25°C Cold start
Leakage Current			0.75	mA	277VAC in
Power Factor (PF)	0.9				
Total Harmonics Distortion (THD)			20	%	100-277VAC, 100% load

**Output Specifications**

	Min.	Typ.	Max.	Units	Conditions/Description
Line Regulation			±3	%	
Load Regulation			±5	%	
Output Voltage Regulation			±5	%	
Ripple and Noise (pk-pk)			0.54	V	20MHz Bandwidth. See note (3)
Ripple Current					N/A
Turn-on Delay Time			1	s	*Measured at 100-277VAC and at full load

**Protection Functions**

	Min.	Typ.	Max.	Units	Conditions/Description
Short Circuit Protection					Auto recovery
Over Current Protection			160%	Io	Auto recovery
Over Voltage Protection					Latching, See individual models OVP levels
Over Temp Protection (Tc)					Latching, re-power on to recover

**Environmental Conditions**

	Min.	Typ.	Max.	Units	Conditions/Description
Operating Temperature (Ta)	-40		50	°C	Non-condensing
Operating Humidity	10		90	%RH	Non-condensing
Operating Case Temperature (Tc)			90	°C	Case temperature measured at the case hot spot Measured at 100Vac, Ta 50°C
Storage Temperature	-40		80	°C	Non-condensing
Storage Humidity	10		95	%RH	Non-condensing
Life Time	Measured at 277Vac, 70,000 hours at Tc 75°C for LCVEA100U540				
Dimensions(L*W*H)	232 * 46.5 * 31 mm 9.13 * 1.83 * 1.22 inch				
Weight			690	g	

**100-LCVEA Series**

Constant Voltage Mode

<b>EMC Compliance and Safety</b>			
<b>EMC Compliance</b>			
<b>Conducted and Radiated Emission</b>	EN 55015 (CISPR15) , FCC part 15 Class B		
<b>Harmonic Current Emissions</b>	EN 61000-3-2 Class C		
<b>Voltage Fluctuations &amp; Flicker</b>	EN 61000-3-3		
<b>EMS Standards</b>	<b>Electrostatic Discharge (ESD)</b>	IEC 61000-4-2	8 KV air discharge, 4 KV contact discharge
	<b>RF Electromagnetic Field Susceptibility</b>	IEC 61000-4-3	
	<b>Electrical Fast Transient</b>	IEC 61000-4-4	
	<b>Surge Immunity</b>	IEC 61000-4-5	L-N 6KV, L-FG/N-FG 4KV
	<b>Conducted RF Disturbances</b>	IEC 61000-4-6	
	<b>Power Frequency Magnetic Field</b>	IEC 61000-4-8	
	<b>Voltage Dips</b>	IEC 61000-4-11	
<b>Safety</b>			
<b>UL</b>	<b>UL8750 ,Type TL, Type HL</b>		
<b>PSE</b>	<b>Comply with PSE</b>		

**Notes**

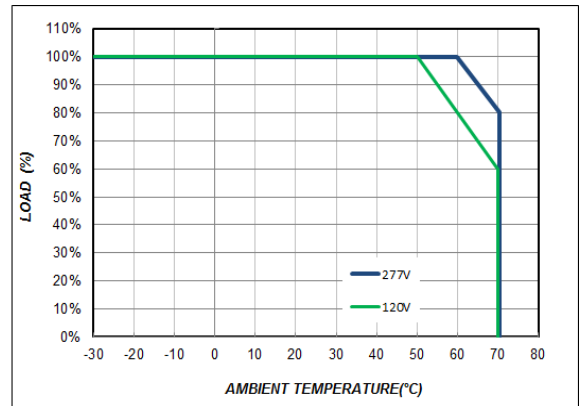
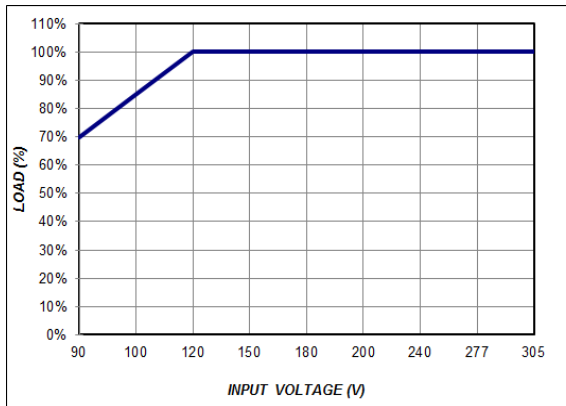
- (1) All parameters not specially mentioned are measured 277VAC input.
- (2) All specifications Typical @25°C , unless otherwise noted, at normal line and load.
- (3) Ripple and Noise measured directly at pins/terminals at nom. load, 0.1uF bypass and 47uF electrolytic, pk-pk @20MHz bandwidth.
- (4) Specified for free-air convection cooling.
- (5) Operating in minimum load is not proper requirement

\* REFERENCE: [www.linkcom.com.tw](http://www.linkcom.com.tw)

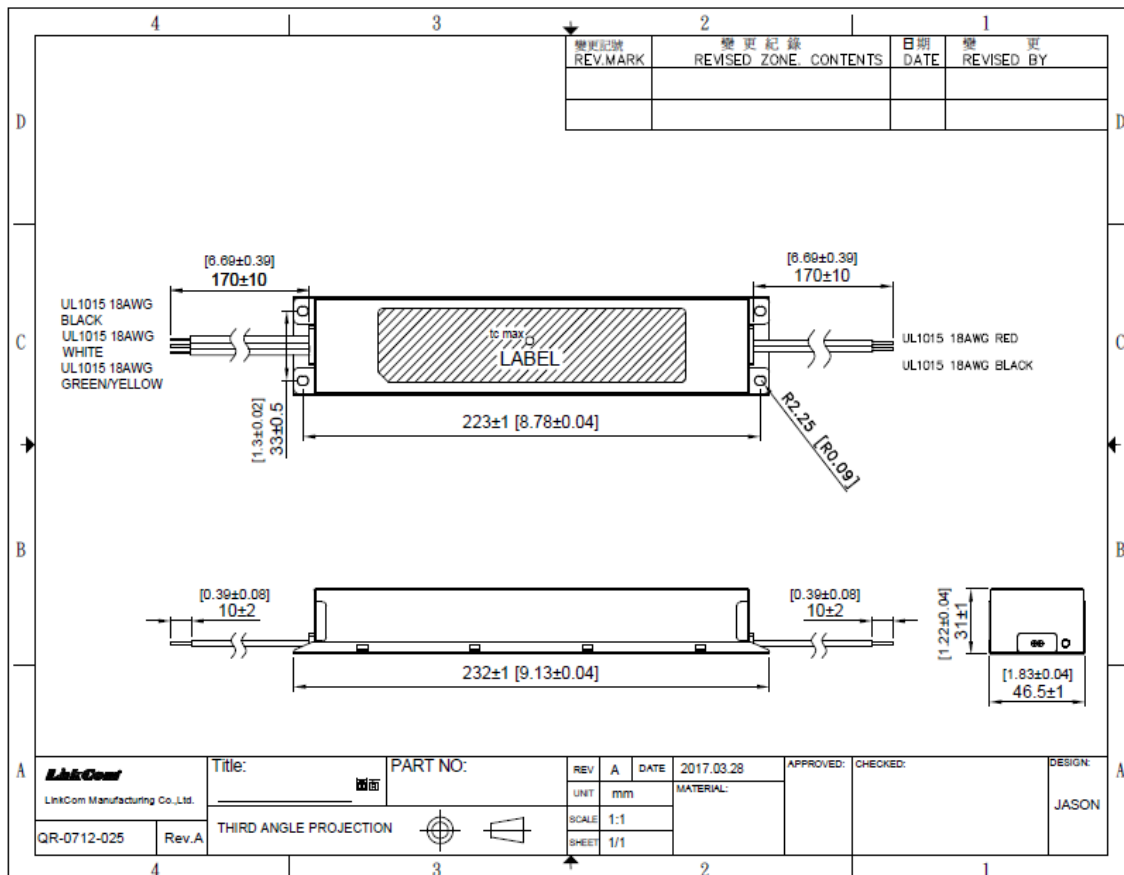
\* Please contact [sales@linkcom.com.tw](mailto:sales@linkcom.com.tw), [sales@linkcomusa.com](mailto:sales@linkcomusa.com) for more information

**100-LCVEA Series**

**DERATING CURVE**



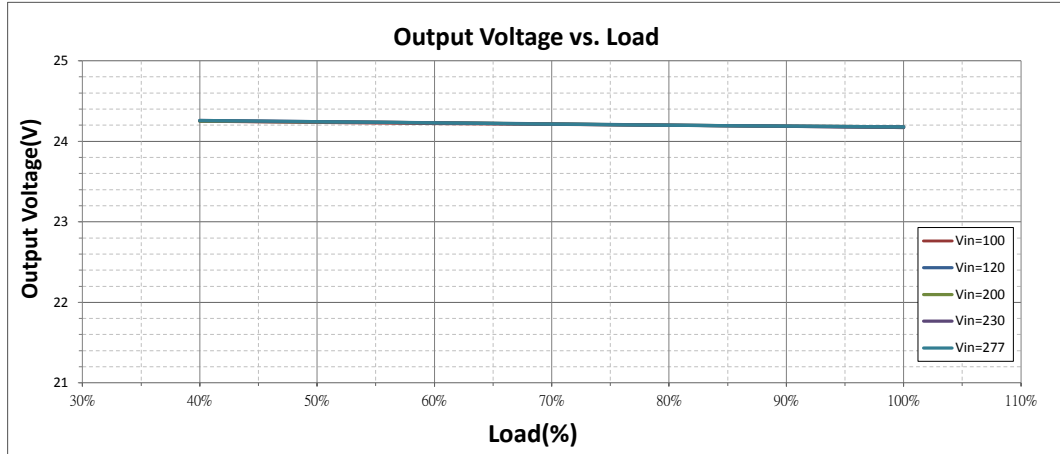
**DIMENSIONS**



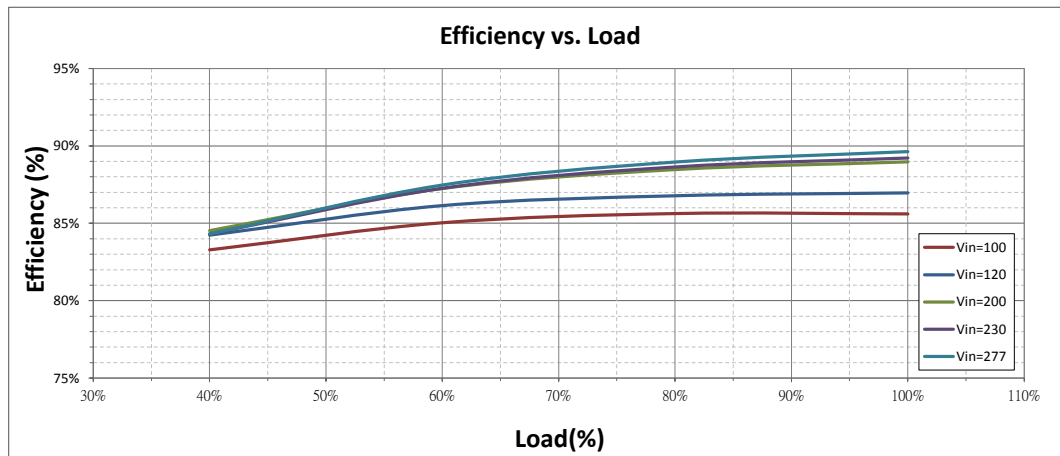
\* REFERENCE: [www.linkcom.com.tw](http://www.linkcom.com.tw)

**100-LCVEA Series**

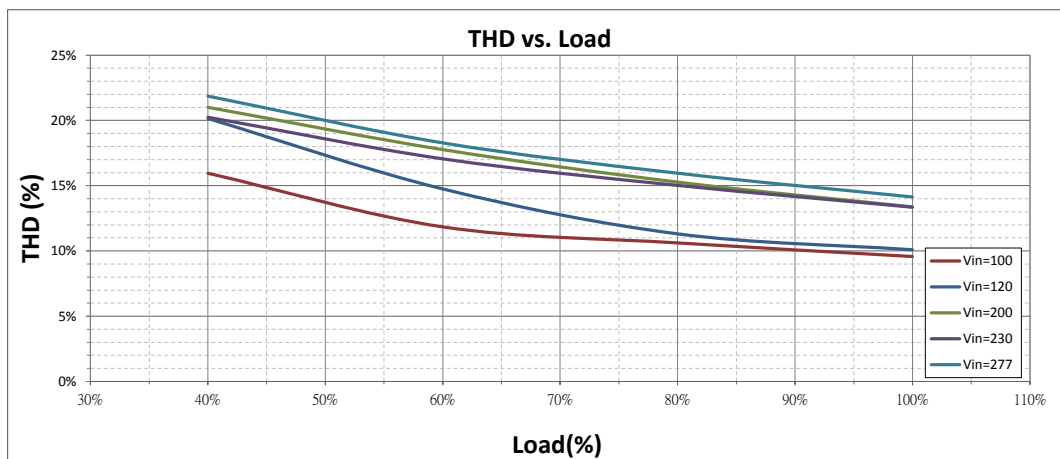
**Output Voltage vs. Load (LCVEA100U240)**



**Efficiency vs. Load (LCVEA100U240)**



**THD vs. Load (LCVEA100U240)**



**100-LCVEA Series**

**Power Factor vs. Load (LCVEA100U240)**

Constant Voltage Mode

