

60-LCVE Series

Constant Voltage Mode



**FEATURES:**

- AC Input 100~277VAC
- Built-in Active PFC Function
- Protection: SCP / OVP / OTP / OCP
- High Operating Ambient Temp: -20°C~+60°C
- Surge protection: L-N 1KV, L-FG/N-FG 2kV
- Safety: UL 879 / PSE
- EMI: CE / FCC Part 15 Class B
- IP 67 Compliant
- Warranty: 5 years (refer to warranty policy)
- RoHS Compliant

**PRODUCT SPECIFICATION**

MODEL	DC OUTPUT POWER (W)	DC OUTPUT VOLTAGE (V)	OUTPUT CURRENT (A)	OUTPUT VOLTAGE TOLERANCE	EFFICIENCY (Typ.)				Power Factor (Typ.)			
					100VAC	120VAC	200VAC	277VAC	100VAC	120VAC	200VAC	277VAC
LCVE-060U125	60	12	5	±5%	83.5%	84.5%	85.0%	85.5%	0.98	0.98	0.96	0.92
LCVE-060U240	60	24	2.5	±5%	86.5%	87.5%	87.9%	88.5%	0.98	0.98	0.96	0.9

**Input Specifications**

	Min.	Typ.	Max.	Units	Conditions/Description
Input Voltage Range	90		305	Vac	
Input Frequency Range	47		63	Hz	
Input Current		0.75		A	100VAC in
Inrush Current			50	A	230VAC in, 25°C Cold start
Leakage Current			0.7	mA	230VAC in
Power Factor (PF)	0.9				
Total Harmonics Distortion (THD)		N/A		%	100-277VAC, 100% load

**Output Specifications**

	Min.	Typ.	Max.	Units	Conditions/Description
Line Regulation			±3	%	
Load Regulation			±3	%	
Output Voltage Regulation			±5	%	
Ripple and Noise (pk-pk)			0.2	V	20MHz Bandwidth. See note (3)
Turn-on Delay Time			1	s	*Measured at 100-277VAC and at full load

**Protection Functions**

	Min.	Typ.	Max.	Units	Conditions/Description
Short Circuit Protection					Auto recovery
Over Voltage Protection					Latching, See individual models OVP levels
Over Current Protection			160%	Io	Auto recovery
Over Temp Protection (Tc)		100		°C	Latching, re-power on to recover

**Environmental Conditions**

	Min.	Typ.	Max.	Units	Conditions/Description
Operating Temperature (Ta)	-20		60	°C	Non-condensing
Operating Humidity	10		90	%RH	Non-condensing
Operating Case Temperature (Tc)			90	°C	Case temperature measured at the case hot spot Measured at 100Vac, Ta 60°C
Storage Temperature	-40		80	°C	Non-condensing
Storage Humidity	10		95	%RH	Non-condensing
Life Time	Measured at 277Vac, 45,000 hours at Tc 75°C .				
Dimensions(L*W*H)	170 * 53 * 32 mm 6.69 * 2.09 * 1.26 inch				
Weight			650	g	

**60-LCVE Series**

Constant Voltage Mode

<b>EMC Compliance and Safety</b>			
<b>EMC Compliance</b>			
<b>Conducted and Radiated Emission</b>	FCC Part 15 Class B		
<b>Harmonic Current Emissions</b>	Comply with EN 61000-3-2		
<b>Voltage Fluctuations &amp; Flicker</b>	Comply with EN 61000-3-3		
<b>EMS Standards</b>	<b>Electrostatic Discharge (ESD)</b>	Comply with IEC 61000-4-2	8 KV air discharge, 4 KV contact discharge
	<b>RF Electromagnetic Field Susceptibility</b>	Comply with IEC 61000-4-3	
	<b>Electrical Fast Transient</b>	Comply with IEC 61000-4-4	
	<b>Surge Immunity</b>	Comply with IEC 61000-4-5	L-N 1KV, L-FG/N-FG 2kV
	<b>Conducted RF Disturbances</b>	Comply with IEC 61000-4-6	
	<b>Power Frequency Magnetic Field</b>	Comply with IEC 61000-4-8	
	<b>Voltage Dips</b>	Comply with IEC 61000-4-11	
<b>Safety</b>			
<b>UL</b>		<b>UL 879</b>	
<b>PSE</b>		<b>PSE</b>	

**Notes**

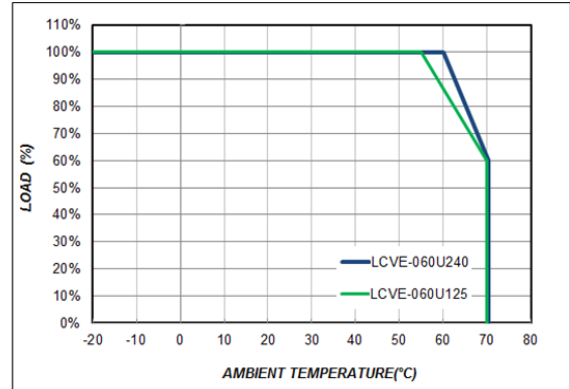
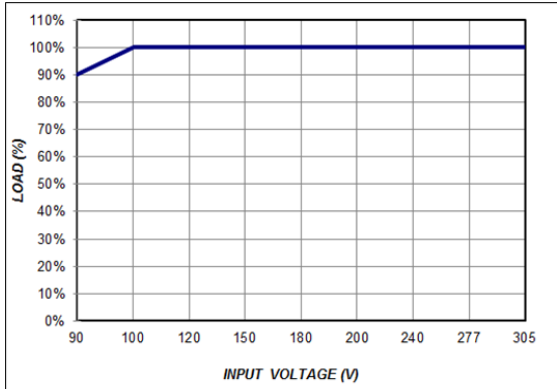
- (1) All parameters not specially mentioned are measured 230VAC input.
- (2) All specifications Typical @25°C , unless otherwise noted, at normal line and load.
- (3) Ripple and Noise measured directly at pins/terminals at nom. load, 0.1uF bypass and 47uF electrolytic, pk-pk @20MHz bandwidth.
- (4) Specified for free-air convection cooling.
- (5) Operating in minimum load is not proper requirement

\* REFERENCE: [www.linkcom.com.tw](http://www.linkcom.com.tw)

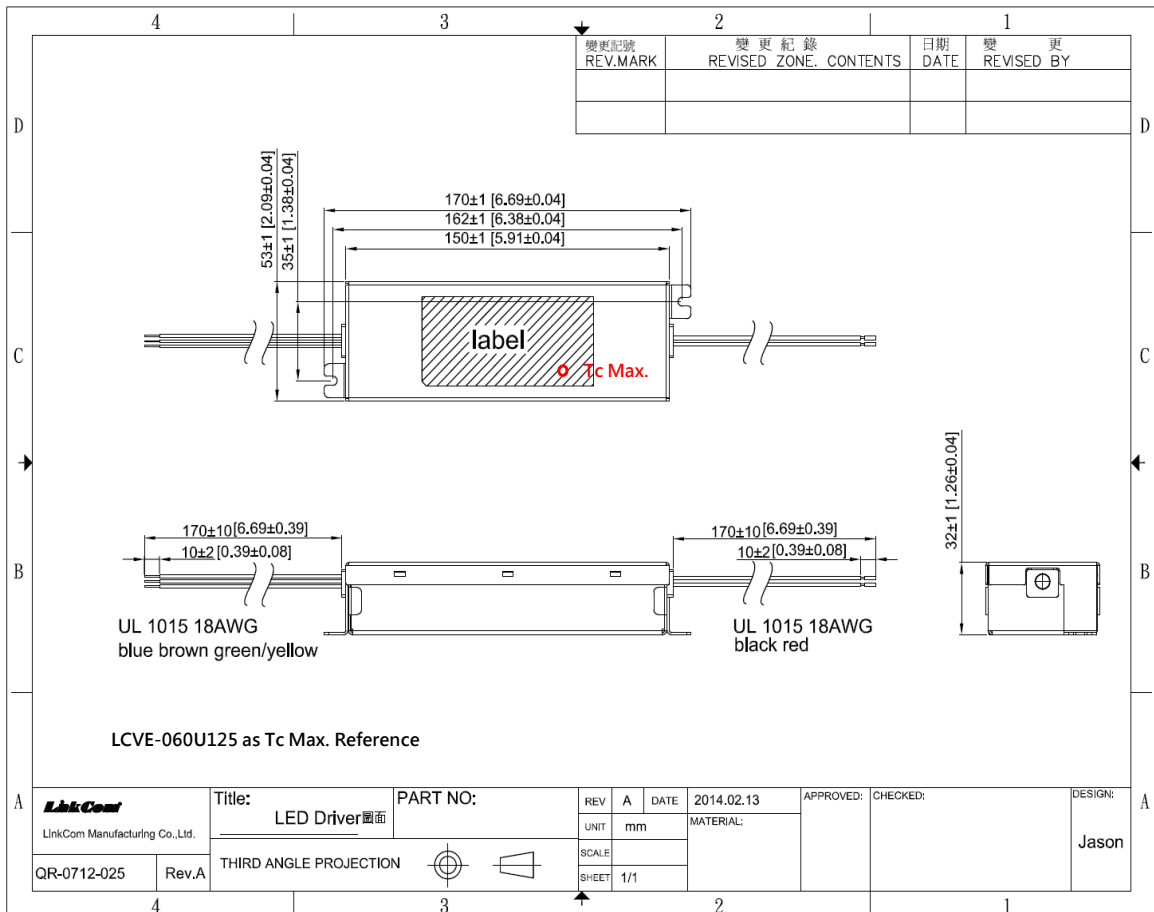
\* Please contact [sales@linkcom.com.tw](mailto:sales@linkcom.com.tw), [sales@linkcomusa.com](mailto:sales@linkcomusa.com) for more information

**60-LCVE Series**

**DERATING CURVE**



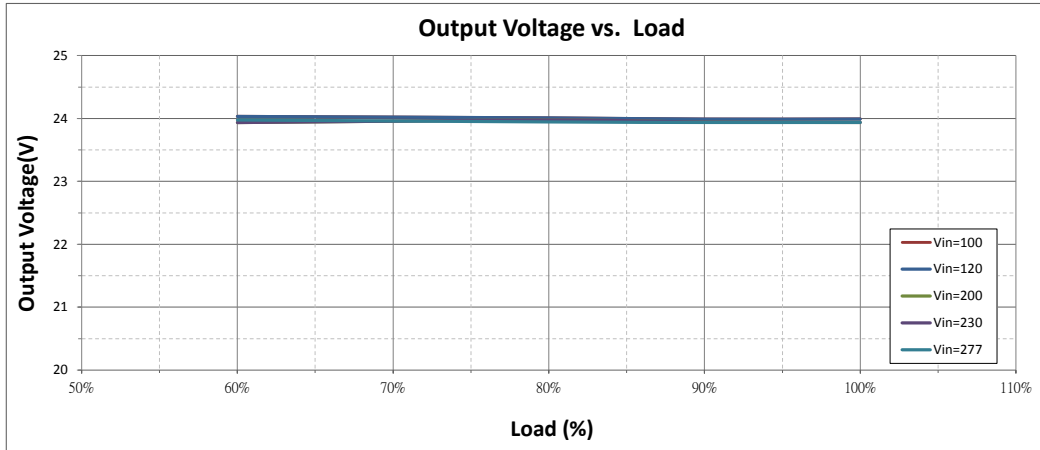
**DIMENSIONS**



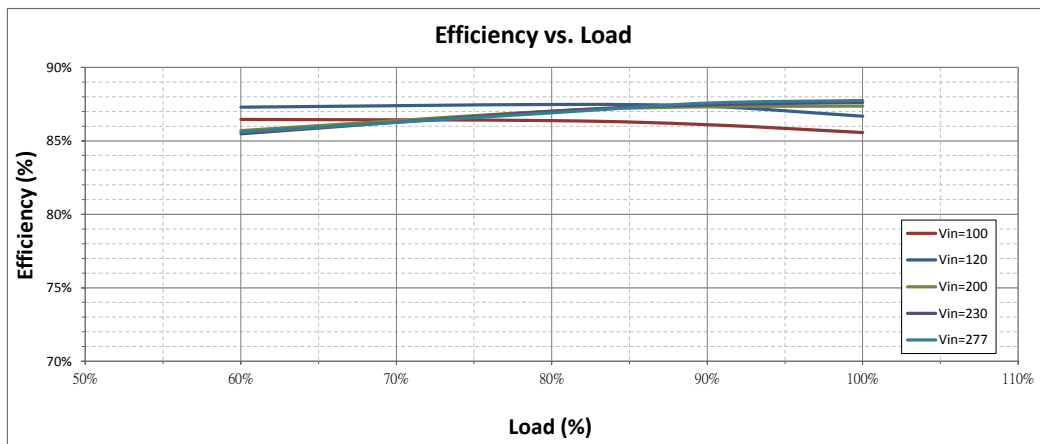
\* REFERENCE: [www.linkcom.com.tw](http://www.linkcom.com.tw)

**60-LCVE Series**

**Output Voltage vs. Load (LCVE-060U240)**



**Efficiency vs. Load (LCVE-060U240)**



**PF vs. Load (LCVE-060U240)**

