

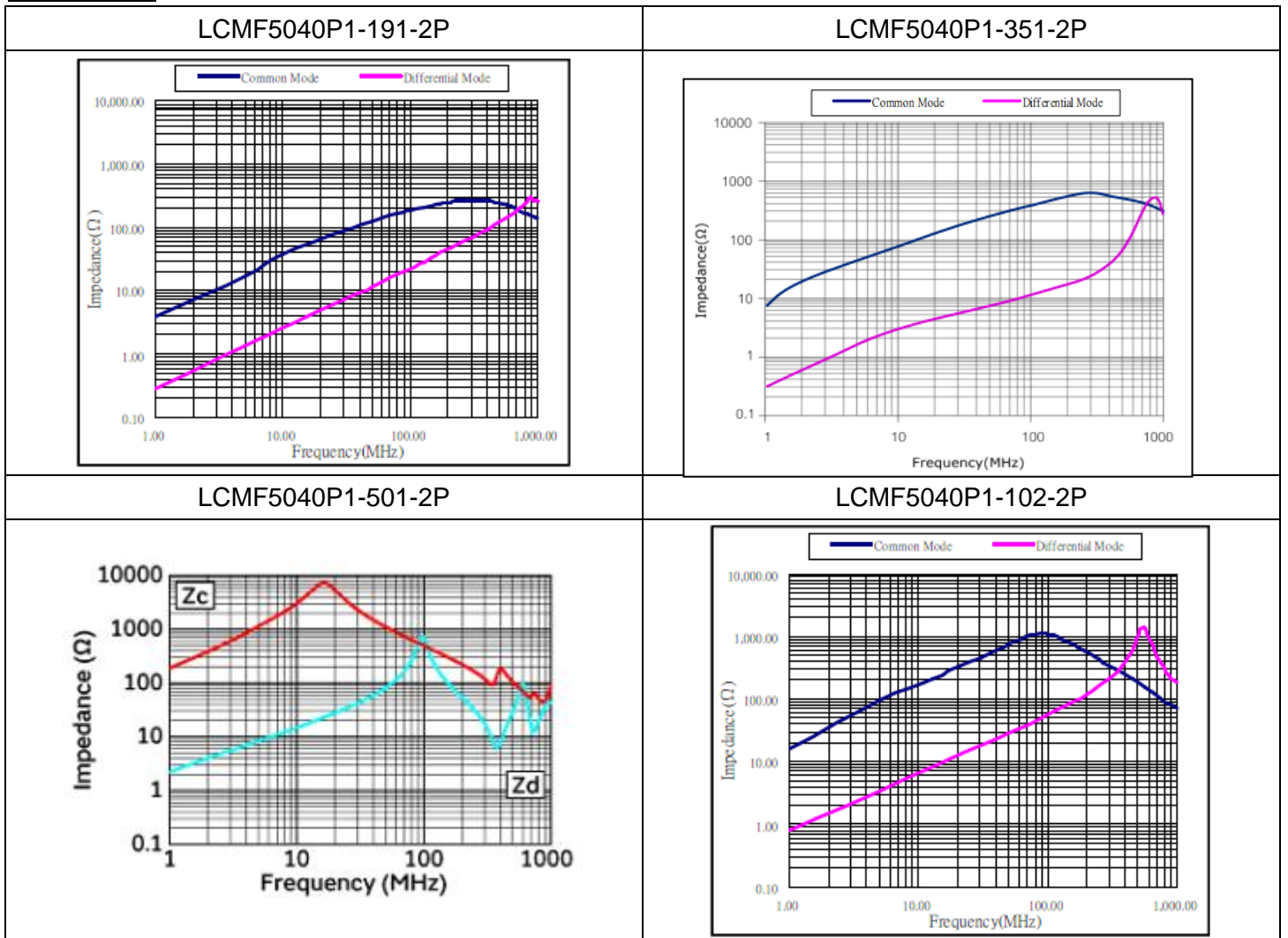
Common Mode SMD Filter for Power Line

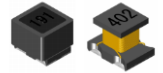
LCMF Series LCMF5040P1

Electrical Characteristics

Part Number	Common-Mode Impedance $Z(\Omega) \pm 40\%$ at 100MHz	Inductance (uH) Ref.	D.C. Resistance (m Ω) Max.	Rated Current (A) Max.	Rated Voltage Vdc (V)	Insulation Resistance (M Ω) Min.	Mark
LCMF5040P1-191-2P	190 Typ.	0.6	20	5.0	50	10	191
LCMF5040P1-351-2P	350 Typ.	1.1	40	2.0	50	10	351
LCMF5040P1-501-2P	500 Typ.	2.3	230	1.0	50	10	501
LCMF5040P1-102-2P	1000 Typ.	3.7	60	1.5	50	10	102
LCMF5040P1-152-2P	1500 Typ.	5.6	100	1.0	50	10	152
LCMF5040P1-302-2P	3000 Typ.	8.0	200	0.5	50	10	302
LCMF5040P1-402-2P	4000 Typ.	1.8	300	0.2	50	10	402

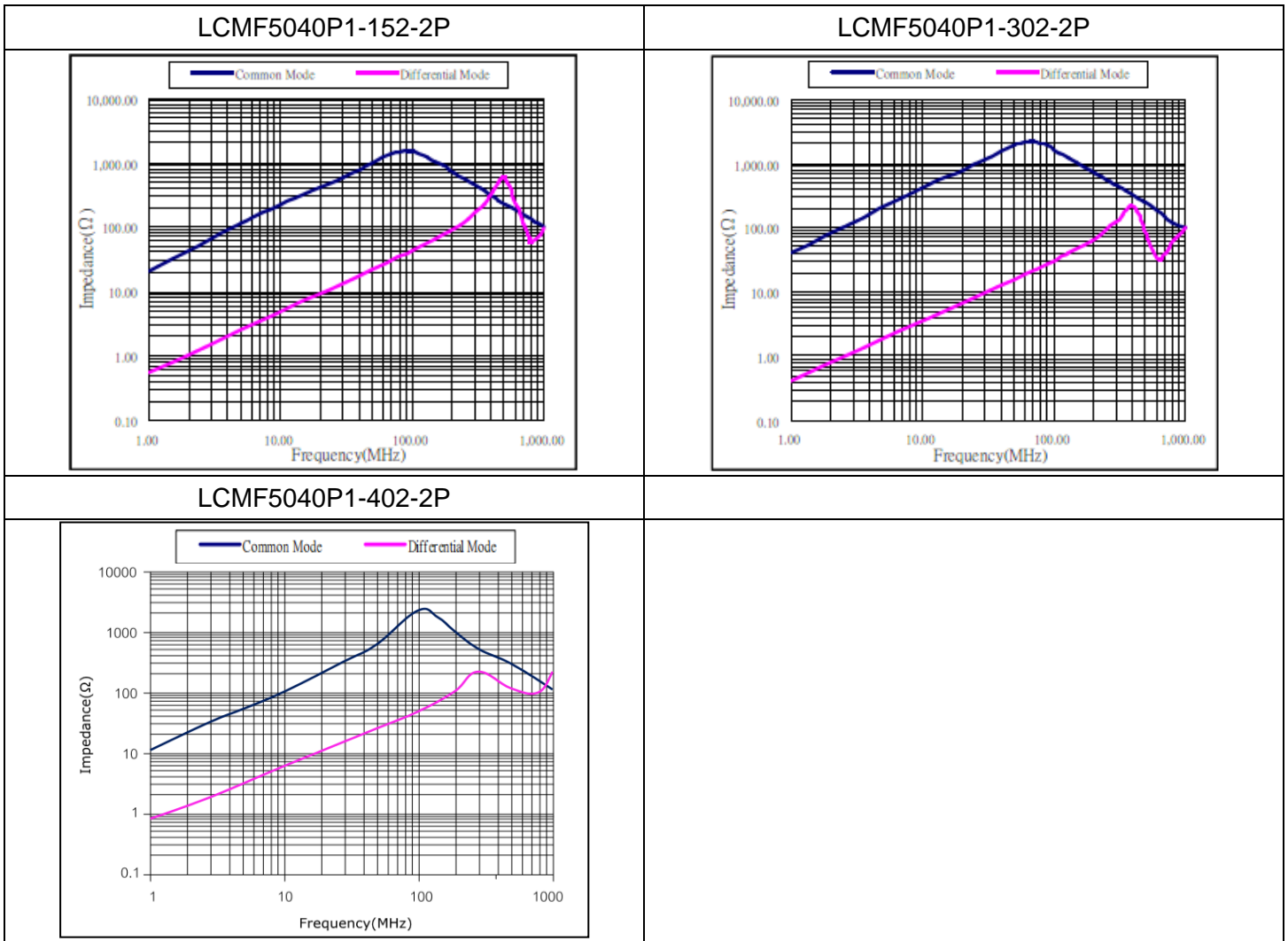
Impedance

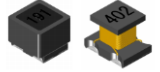




Common Mode SMD Filter for Power Line

LCMF Series LCMF5040P1

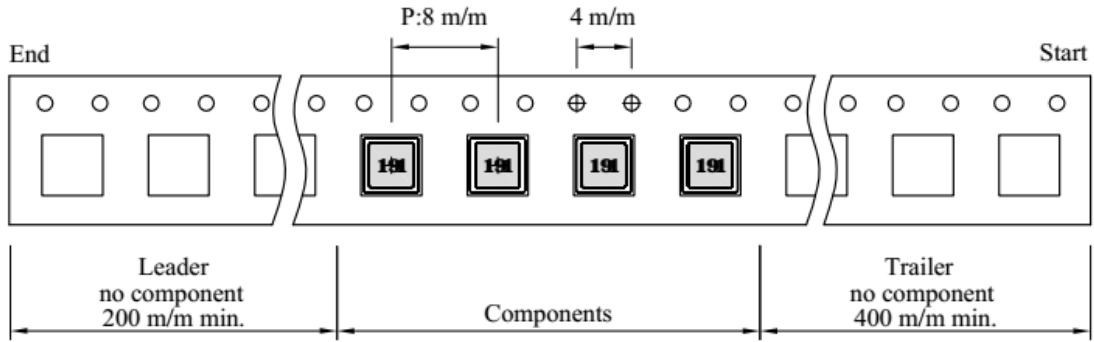




Common Mode SMD Filter for Power Line

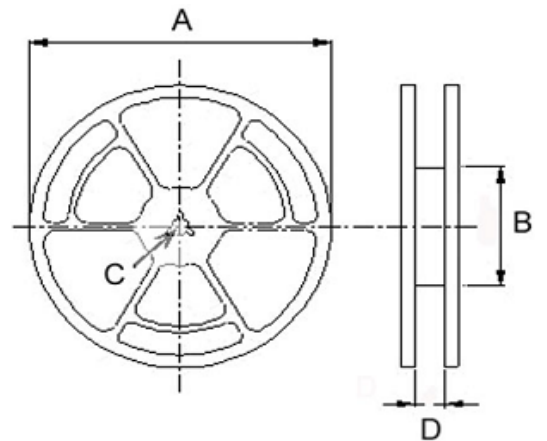
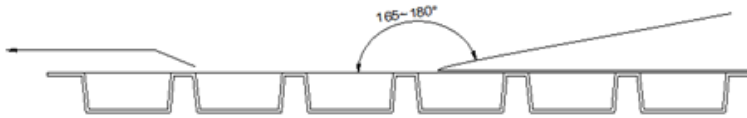
LCMF Series LCMF5040P1

Packing Information

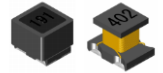


Style	A	B	C	D	G	N	T
13 - 16	330	21±0.8	13±0.5	16	18 ⁺⁰	50 ⁻⁰	22.4

Adhesive strength of cover tape is 20 to 120 gf
The conduction band direction



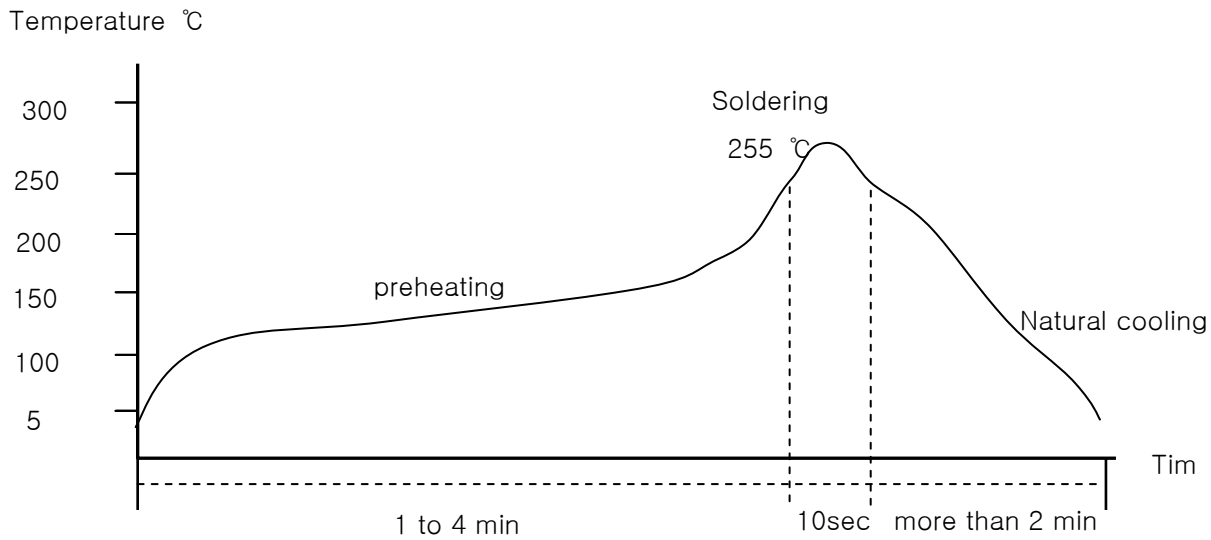
Reel Dimensions (Unit: mm)				Quantity
A	B	C	D	Pcs/Reel
330	100	13	16.5	1500



Common Mode SMD Filter for Power Line

LCMF Series LCMF5040P1

IR Reflow profile



Temperature and humidity . After that , no mechanical and electrical defect should be found .